

P.O. Box 419264  
Kansas City, Missouri 64141  
816-561-5323  
816-561-1991 Fax  
kweitzel@swassn.com

Since 1933

Environmental  
Institute for Golf  
Presidential Club

Heart of America Chapter  
**GCSAA**  
GOLF COURSE SUPERINTENDENTS ASSOCIATION OF AMERICA

*Our Mission is to promote the welfare of the game of golf, the science and art of golf course management, the organizational and business effectiveness of the profession, the professional image and well-being of individual members, and to unite golf course superintendents within the Greater Kansas City area.*

Volume 47, No. 5

THE OFFICIAL PUBLICATION OF THE HEART OF AMERICA GCSA

July 2015

## HAGCSA Nine & Dine



***Heart of America Golf Academy  
Tuesday, July 21, 2015***

- Pythium Disease
- S&R Recap
- Committee Reports

Heart of America Chapter  
**GCSAA**  
GOLF COURSE SUPERINTENDENTS ASSOCIATION OF AMERICA

# 2015 HAGCSA Officers and Board of Directors

**PRESIDENT:**

*Steve Wilson, CGCS*..... 913.236.9951 (Milburn Country Club, Overland Park, KS)

**VICE PRESIDENT:**

*Duane Sander, CGCS*..... 816.781.8975 (Shoal Creek/Hodge Park Golf Courses, Kansas City, MO)

**SECRETARY/TREASURER:**

*Andy Klein, CGCS*..... 913.707.3563 (Falcon Ridge Golf Course, Lenexa, KS)

**IMMEDIATE PAST PRESIDENT:**

*Todd Bohn*..... 913.592.3329 (Wolf Creek Golf Links, Olathe, KS)

**DIRECTOR, ROUNDS4RESEARCH:**

*Ethan Shamet*..... 913.757.2938 (Deer Trace Golf Course, Linn Valley, KS)

**DIRECTOR, MEMBERSHIP, HISTORICAL, AWARDS:**

*Nick Kray* ..... 913.402.1576 (Nicklaus Country Club at LionsGate, Overland Park, KS)

**DIRECTOR, SCHOLARSHIP & RESEARCH:**

*Andrew Jones*..... 816.513.8911 (Swope Memorial Golf Course, Kansas City, MO)

**DIRECTOR, MEETINGS & PROGRAMS:**

*Mark Newton, CGCS*..... 913.515.3467 (Canyon Farms Golf Club, Lenexa, KS)

**DIRECTOR, EDUCATION:**

*Matt Delventhal*..... 816.942.3977 (Minor Park Golf Course, Kansas City, MO)

**DIRECTOR, PR/COMMUNICATIONS:**

*Brent Stephenson*..... 816.500.5421 (Staley Farm Golf Club, Kansas City, MO)

**SPECIAL DIRECTORS:**

*Jon Bennett, Employee Tournament*..... 913.362.7950 (Kansas City Country Club, Mission Hills, KS)

*Wes Kleffner, Affiliate Liaison*..... 816.210.0071 (Bayer Environmental Science, Overland Park, KS)

*Richard Shumate, MO Cup Challenge*..... 913.397.6009 (Van Wall Equipment, Olathe, KS)

**CHAPTER DELEGATE:**

*Jeff White, CGCS*..... 913.362.4530 (Indian Hills County Club, Mission Hills, KS)

**HEARTBEAT EDITOR:**

*Tim Nielsen* ..... 816.331.3306 (Creekmoor Golf Club, Raymore, MO)

**EXECUTIVE DIRECTOR:**

*Kim Weitzel*..... 816.561.5323

*Published by the:*

**HEART OF AMERICA GOLF COURSE SUPERINTENDENTS ASSOCIATION**

P.O. Box 419264, Kansas City, MO 64141-6264 • Phone: 816.561.5323, Fax: 816.561.1991, [www.hagcsa.org](http://www.hagcsa.org)

# TABLE OF CONTENTS

President’s Message..... 4  
HAGCSA Nine & Dine..... 6  
Pythium Disease..... 8  
New Member ..... 9  
The Pythium Project..... 10  
Upcoming Events..... 11  
S&R Committee Report ..... 12  
Assistant Superintendent Committee ..... 15  
Nine & Dine Registration Form..... 20  
Editor’s Column..... 21  
Membership Application..... 22  
Advertisers’ Index ..... 23



*People...Products...Knowledge...*

**Rick Blasi**  
**913-484-7735**

**Mark Person**  
**816-560-5448**

**Brian Ruder**  
**913-706-5521**

**Tyrone Satterfield**  
**913-541-1310**

**John Sheehe**  
**913-424-6143**

**Helena Chemical Company**  
**8215 Hedge Lane Terrace, Shawnee, KS 66227 • Office 913-441-0676**

Helena & People...Products...Knowledge.. are registered trademarks of Helena Holding Company. ©2015 Helena Holding Company.

**FERTILIZER FUNGICIDES INSECTICIDES HERBICIDES**

# President's Message

The saying around these parts goes, "If you don't like the weather, just wait five minutes and it will change." That certainly is true in our area. The ever-changing weather is one of the greatest challenges of being a Superintendent in the Midwest. This spring and early summer has certainly been no exception. Most of us entered May with a precipitation deficit somewhere in the neighborhood of 2-3" for the year. In the back of our heads some eternal pessimists (myself included) were thinking, "Man, I hope this doesn't turn into the summer of 2012 all over again!" As I write this President's message in early June, we have received rainfall 34 or so of the last 40 days and have recorded around 14" of precipitation during this short time period! Now I am spending nights awake thinking, "Man, I hope this doesn't turn into the summer of 2010 again!" As quickly as the weather changes in our area we may all be doing our rain dances again by the time you read this issue of the Heartbeat!

I hope that even with all of the ups and downs that Mother Nature has sent us and the busy schedules we all juggle this time of year that you have found the time to attend some Heart events. We recently completed the 31st Annual Scholarship and Research Tournament at Alvarado County Club. We had a very good turnout for golf and the auction at our preeminent event of the year. Thank you very much to the folks at Alvarado Country Club for hosting this important fundraiser that supports our industry.



In addition to the S&R Tournament, another Heart funding source for turf scholarships and research at our local universities is the Rounds4Research initiative. The 2015

Continued on next page

15-040 MO Int'l

ORGANIC NITROGEN  
**Milorganite**<sup>®</sup>  
 FERTILIZER

USE MILORGANITE TO RELIEVE  
**STRESSED TURF**  
 IMPROVE COLOR & DENSITY

Use Milorganite mixed with sand (eg. 50/50 by volume) as a topdressing on thin spots on greens. Apply weekly until the turf has recovered.

1-800-287-9645 | [www.milorganite.com](http://www.milorganite.com)

President's Message - cont.

Rounds4Research auction was live online June 8th - 21st. I want to extend a big thank you to the 30 local courses who donated rounds for the auction this year and to the Committee Chairman, Ethan Shamet, for all of the time and effort that he and his committee put into this initiative.

Please mark your calendars and plan to attend the Nine & Dine/Past Presidents event to be held July 21st at the Hart of America Golf Academy and for the Employee Tournament at Minor Park Golf Course on August 3rd. Stay cool!

Steve Wilson, CGCS



# LEGACY SCHOLARSHIP

funded by



&



The Heart of America GCSA Legacy Scholarship Award offers educational aid to the children and grandchildren of HAGCSA members. Award of \$2,500 is funded by Professional Turf Products and the TORO Company. The award is administered by the Heart of America Board of Trustees. Applications will be reviewed by an independent committee consisting of three high school educators and three college administrators. All decision of the committee will be final. Applicants will be notified of their status by mail. All scholarship award checks will be made payable to the applicant and his/her educational institution. If you are interested you may obtain an application from the HAGCSA website: [www.hagcsa.org/scholarships](http://www.hagcsa.org/scholarships) or by calling the Association Office at 816-561-5323. Deadline is October 30, 2015.



2014 Legacy Scholarship Recipient

**TESSA DAVIDS**

daughter of Paul Davids, CGCS, Superintendent, Sycamore Ridge Golf Course



## Simplifying irrigation with smart technology.

Keeping the world, and your golf course, beautiful. That's intelligent!

Call Brian or Jamie today to learn how Rain Bird® can help!

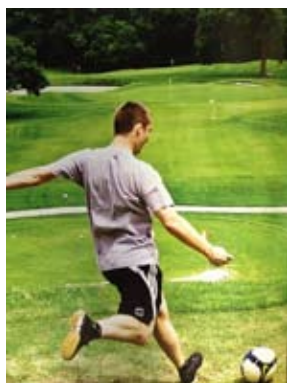
**Brian - Ph: 913-530-3903 | Jamie - Ph: 913-530-4729**

[www.Turfwerks.com/RainBird/](http://www.Turfwerks.com/RainBird/)



## HAGCSA Nine & Dine

July 21 at Heart of America Golf Academy




The Heart of America Golf Academy is owned by Kansas City and operated and managed by Orion Management Solutions. It is comprised of a 9-hole regulation links-style golf course, as well as a 9-hole executive course and a 3-hole Tom Watson designed First Tee facility. It also is the home of the first regulation Footgolf course in the state of Missouri.

derful wife, Heidi, and three kids: Hannah (7), Eva (5) and Jonah (2).

Robert Ralston is the Assistant Superintendent and he has been at the Heart of America Golf Academy for 3½ years. He received his Bachelors degree in Horticulture from Kansas State University. Robert has a wonderful wife, Molly, and son William 1½.

Sam Bailey has been the GC Superintendent at Heart of America Golf Academy for the past 3½ years. He received his Associates degree in Horticulture from Northeast Community College and completed the Sports Turfgrass Management program through the University of Georgia. He has a won-

FOLLOW US ON ...



@HAGCSA

**ALGAE** *Green*<sup>TM</sup>

Distributed By: Kansas City Turf Supply  
913-915-2994 • 816-518-8691

## ***Your Association Needs You!***

***Interested in Joining the HAGCSA  
Board of Directors? Please  
contact Todd Bohn at  
[todd@wolfcreekks.com](mailto:todd@wolfcreekks.com) or  
913.592.3329***



## **WHEN IT HAPPENS**



## **MAKE SURE YOUR BUNKER IS READY.**

**MIDAMERICASAND.COM**



**MACRO-SORB**  
— TECHNOLOGIES LLC —

## **Advanced Amino Acid Technology**

### ***Products That Perform***

Macro-Sorb Technologies is committed to your success in turf management. We continue to offer the highest-quality amino acid-based products in the industry. And while the look of our products has changed, the formulations that you know and trust have remained the same.

Visit our new website for more information on the technology behind Macro-Sorb and to view details on our full line of products.

***Kansas City Turf Supply, Inc.***  
Greg King  
913-915-2994

   [www.macro-sorb.com](http://www.macro-sorb.com)



# Pythium Disease

By Wes Kleffner, Special Director

Pythium turf diseases cause real problems for golf course superintendents. Major diseases are caused by various Pythium species including: high and low temperature blights, root rot and root dysfunction. Chipco Signature and Banol are effective fungicides for these problems. Resistance has not been an issue for either fungicide after >20 years of commercial use, making them reliable choices for Pythium control on warm- and cool-season turfgrass.

Pythium blight symptoms appear as sunken, greasy black patches and streaks on turf that can take on a reddish-orange to dark gray color. Affected turf is often matted and has a water-soaked appearance. White,



Untreated, Pythium turf diseases can kill large areas of turf within a matter of days. Photo: Dr. Bruce Martin, Clemson University.

cottony mycelium may be present in the early morning on affected areas, or after incubation of samples overnight in a moist chamber or plastic bag. *Blight can kill turf in 24-48 hours and preventive measures are key for controlling this disease.* Different species cause blights at low or high temperatures, but high humidity or leaf wetness are needed for disease to develop.

Pythium root rot affected turf can show irregular chlorotic, yellow or orangish patches or streaks, or thinned areas of turf. No foliar mycelium is produced, but roots may appear water-soaked and rotted or show a significant reduction in mass or root hair production. Microscopic diagnosis may be needed to detect Pythium infestations in roots. Root rot can occur in cool or hot conditions, and is especially active when soil is wet and plants are stressed.

Pythium root dysfunction is caused by Pythium volutum and is seen primarily on creeping bentgrass that is under stress. Infections take place in the spring and fall, reducing root growth, but symptoms can appear later when plants are under

Continued on next page

## QUALITY S600TX COMPACT SKID STEER LOADERS – FROM A SOURCE YOU TRUST

A proven leader in innovative, high-performance lines of construction equipment, Vermeer brings the industry the S600TX compact skid steer loaders.

Vermeer



### VERMEER GREAT PLAINS

Olathe, KS  
1-800-932-3655

Goddard, KS  
1-800-835-2301

Brookline, MO  
1-800-845-7833

Catoosa, OK  
1-866-416-3300

Oklahoma City, OK  
1-800-201-4778



## Pythium Disease - cont.

decline can turn orange or brown. Root mass and root hairs are greatly reduced, and plants tend to collapse under high-temperature conditions. Microscopic diagnosis is required to confirm the presence of *P. volutum* in roots.

All of these Pythium diseases require different management approaches. Prevention is a critical need for all of these diseases as they tend to occur when the turf has poor chances for recovery. Chipco Signature provides excellent preventive activity against Pythium diseases. Since it is fully systemic, there is no need to water-in applications. Chipco Signature with StressGard Formulation Technology provides additional plant health benefits that compliment seasonal control of Pythium and other diseases.

Banol has reliable preventive and curative activity. For Pythium blight, applications need to be targeted on to the foliage and crowns; for Pythium root rot, the application needs to be watered into the upper root zone to be most effective. Pythium root dysfunction, Chipco Signature and Banol should be combined in a spring and fall rotation program. North Carolina State University research has suggested a fungicide rotation program: [http://www.turffiles.ncsu.edu/diseases/Pythium\\_Root\\_Dysfunction.aspx](http://www.turffiles.ncsu.edu/diseases/Pythium_Root_Dysfunction.aspx)



Apply less. Achieve more.

Specticle® from Bayer provides effective, long-lasting pre-emergent weed control. Specticle gives you superior control of crabgrass, goosegrass and *Poa annua* as well as 75 other troublesome grasses and broadleaf weeds. Get ready to achieve more with Specticle. For more information, visit [www.BackedbyBayer.com/Specticle](http://www.BackedbyBayer.com/Specticle).

Wes Kleffner | Area Sales Manager T&O | Bayer CropScience LP | Environmental Science | 12810 Perry St. | Overland Park, KS 66213  
Tel: 913-951-3435 | Mobile: 913-205-5381 | [wes.kleffner@bayer.com](mailto:wes.kleffner@bayer.com)

Specticle G is now available as a spreadable granule.

Bayer CropScience LP, Environmental Science Division, 2 TW Alexander Drive, Research Triangle Park, NC 27709. 1-800-331-2867. [www.BackedbyBayer.com](http://www.BackedbyBayer.com). Bayer, the Bayer Cross, and Specticle are registered trademarks of Bayer. Not all products are registered in all states. Always read and follow label directions carefully. ©2014 Bayer CropScience LP.



**The HAGCSA and the Board of Directors are proud to welcome our newest member:**

**Cozette Hadley, BASF**

# The Pythium Project

By Max Gilley, University of Missouri

The recent high amounts of precipitation and increased temperatures have caused an influx of samples containing Pythium root diseases submitted to the MU Plant Diagnostic Clinic. The forecast doesn't seem to be letting up in the near future, so the MU Turf Pathology team wanted to write a brief article reminding turf managers what to scout for and if you do find or suspect Pythium root diseases, get ahold of us!

Pythium root rot (PRR) occurs in over-saturated conditions or areas with poor drainage. Disease outbreaks can occur following high rainfall events accompanied by high temperature stress. Symptoms of turf infected with PRR initially look wilted, and then progress into yellow or dark-colored areas occurring in irregular, mosaic-like patterns occasionally following drainage patterns (Fig. 1). Individual plants may have rotted crowns and roots. Several *Pythium* spp. have been associated with PRR throughout the country. Pythium root dysfunction (PRD) is a disease that was recently described in North Carolina on young (<5-7 years) bentgrass putting greens. While we have not observed PRD or isolated the causal organism from submitted samples, it is a disease we are on the look out for. Symptoms of PRD include plants that are initially wilted and chlorotic then develop a yellow-to-orange foliar decline. Infected roots will simply be tan or buff and lack root hairs, one of the distinguishing characters between PRD and PRR. Unlike PRR, symptoms of PRD are most severe during periods of hot and/or dry weather and develop on exposed, dry areas of turf as opposed to low-lying areas most commonly associated with PRR. More information on PRR/PRD can be found in a previous disease update ([6/26/2011 update](#)) and Disease Profile ([PRR Disease Profile](#)).

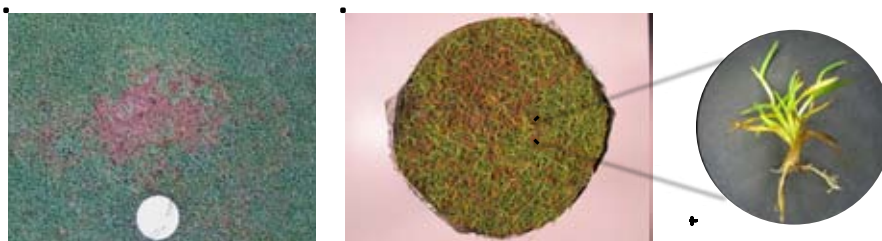


Fig. 1) Chlorotic and necrotic symptoms associated with PRR.

The *Pythium* project was developed to determine the distribution of *Pythium* spp. causing root diseases in the Midwest. Over the 2014 growing season, 14 samples from IL, KS, and MO were received with suspected Pythium root disease. Thirty-seven isolates were tentatively identified as *Pythium* spp. from these samples. These isolates will be molecularly identified then screened in greenhouse virulence assays to evaluate isolate aggressiveness. Additional greenhouse

Continued on page 16



<u>DATE</u>	<u>EVENT</u>	<u>LOCATION</u>
July 21	Nine & Dine (PP Event)	Heart of America Golf Academy
August 3	Employee Tournament	Minor Park Golf Course
September 15	Vendor Appreciation	Twin Peaks
October 5-6	MO Cup Challenge	Old Kinderhook Golf Course
November 4	Annual Meeting	Indian Hills Country Club
December 14-15	Common Ground	Olathe Convention Center
January 8, 2016	New Year Party	Boulevard Brewery

Midwest Pump & Fountain, LLC is dedicated to meeting your pumping needs. We specialize in golf course and large water feature pumping systems. From new installations and retro-fits to preventative maintenance plans and efficiency audits we can help keep your pumps running smoothly. Factory authorized and trained by Watertronics and Rain Bird, but capable of working on all manufacture's stations. We have customers with Watertronics, Rain Bird, Flowtronex, PSI, Carroll Childers and Syn-croflo as well as no name "stick built" stations.

Midwest Pump & Fountain also sells, installs, services and repairs all major manufacture's fountains. As factory trained experts we are here to solve your fountain problems...don't let just anyone work on your fountain. We are a distributor for Aqua Control Fountains, as well as Aqua Master Fountains.




**MIDWEST**  
PUMP & FOUNTAIN, LLC

Andy Jones 816-863-7335

# S&R Committee Report

By Andrew Jones, Director

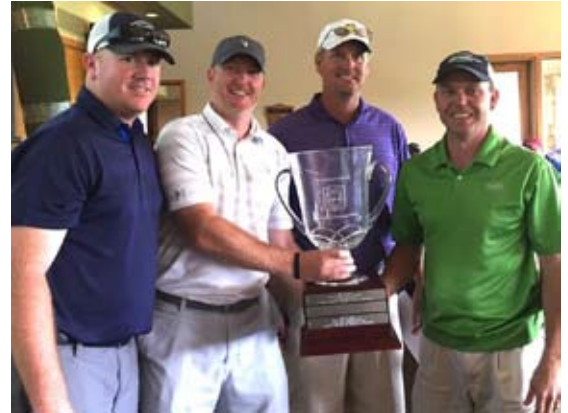
The 2015 Scholarship and Research Tournament went off as planned on Monday, June 15 at Alvarmar Country Club. I can't thank everyone enough who participated in this event. The final numbers are not in at this time



Andrew Jones, S&R Chairman

but I believe the tournament and auction were a huge success. The auction alone raised roughly \$10,000. A huge thanks goes out to all the vendors who donated products or services to the auction. This had to be one of our best auctions we've had in the past few years. We had 132 players which was an incredible turnout. The top three prizes went to the following teams:

- 1st Place (Score 53): Helena Chemical (Rick Blasi, Brian Ruder, John Sheehe, Paul Davids, CGCS, Bill Irving)
- 2nd Place (Score 55): Kansas City Country Club (Loren Breedlove, Mark Bado, Jonathan Bennett, Grant Suderman, Thomas F.)
- 3rd Place (Score 55): Mississippi Valley GCSA (Tim Roethler, Rob Schaff, Mike Null, Richard Carlson, Chuck Gast)



Tournament Winner: Helena Chemical (L-R: John Sheehe, Bill Irving, Paul Davids, CGCS, Brian Ruder; not pictured - Rick Blasi).

The vendor support this year was tremendous. First and foremost, I would like to thank our title sponsor, Professional Turf Products. Tracy Bales and Brad Davisson stepped up for the second year in a row, and we can't thank them enough. They also donated the sleeve of Taylor Made golf balls to every participant. I hope you had a chance to look over the pieces of equipment they had set up.

Our lunch and dinner sponsor was Paul Carlson with Syngenta. Thank Paul for allowing us to have a full dinner for the post tournament meal.

We were also fortunate to have five beverage sponsors this year to keep us hydrated. Our beverage sponsors were as follows:

- BASF - Cozette Hadley
- Floratine Midwest - Curt Gillette and David Hunter
- Macro-Sorb Technologies - John Haguewood
- Supreme Turf Products - John Dixon
- Williams Lawn Seed - Josh Williams

I'd also like to recognize Jeff White, CGCS, as the 50/50 Pot winner; who donated his winnings back to the S&R Fund. Thank you, Jeff!



Tom Arne, Auctioneer, put his skills to work and helped raise money at the live auction.

Continued on next page

**S&R Committee Report - cont.**

Since Alvamar was having an event on the public golf course that day, we were in need of some golf carts in order to accommodate our field. Manny Cervantes with Kansas Golf & Turf and Kris Casburn with M&M Golf Cars came through last minute to haul carts over for us. I want to thank you guys for the help with the carts.

We also had numerous tee sponsors that all donated their money. We appreciate the support you all have shown.

This tournament was a big success, but we are always looking to improve. If you have questions or comments on how we can make next year even better, please let me know. Thanks again to everyone who contributed this year.

# Supreme

TURF PRODUCTS, INC.

THE ULTIMATE IN PERSONAL SERVICE & PRODUCT KNOWLEDGE

**Serving Illinois, Missouri, and Kansas  
for Over 25 Years**

<p><b>CHEMICALS:</b></p> <ul style="list-style-type: none"> <li>• Syngenta</li> <li>• Bayer</li> <li>• Monsanto</li> <li>• Dow</li> <li>• B.A.S.F.</li> <li>• NuFarm</li> <li>• PBI Gordon</li> <li>• Regal</li> </ul>	<p><b>FERTILIZER:</b></p> <ul style="list-style-type: none"> <li>• Anderson's Golf Products</li> <li>• ReDox Turf</li> <li>• Milorganite</li> <li>• Nature Safe</li> <li>• Emerald Isle</li> <li>• Grigg Brothers</li> <li>• Earth Works</li> </ul>
<p><b>SEED:</b></p> <ul style="list-style-type: none"> <li>• Jacklin Seed Company</li> <li>• Tee-2-Green</li> <li>• Seed Research of Oregon</li> <li>• Pick Seed</li> </ul>	<p><b>ACCESSORIES:</b></p> <ul style="list-style-type: none"> <li>• Standard Golf</li> <li>• Par Aide</li> <li>• Bayco Golf</li> </ul>
<p><b>AMENDMENTS:</b></p> <ul style="list-style-type: none"> <li>• Profile</li> <li>• Sand-Aide</li> </ul>	<p><b>SERVICES:</b></p> <ul style="list-style-type: none"> <li>• Spyder Delivery Service</li> <li>• Soil Testing &amp;</li> <li>• Recommendations</li> <li>• Irrigation Water Suitability</li> </ul>

19925 W. 161<sup>ST</sup> STREET; SUITE E • OLATHE, KS 66062 • 913-829-3611

<p><i>JOHN DIXON</i> 816-210-0071</p>	<p><i>MIKE KIPPER</i> 913-208-5268</p>
---	--

supremeturfproducts.com

## Special Thanks to our Sponsors

<p><b><u>TITLE SPONSOR</u></b></p> <div style="display: flex; justify-content: space-around; align-items: center;"> </div>	<p><b><u>HOLE SPONSORS</u></b></p> <p>Dow Agro Science E-Z-GO Textron GCSAA Grass Pad, Inc. Industrial Sales Company ISTRC Kansas City Country Club Kansas Golf &amp; Turf Midwest Laser Leveling Mission Hills Country Club Quali-Pro R.M.I. Golf Carts Reinders, Inc. Select Turf Products Shadow Glen, The Golf Club Turfwerks Vermeer Great Plains VGM Club</p>	<p><b><u>AUCTION DONORS</u></b></p> <p>Commercial Turf &amp; Tractor E-Z-Go Textron Green Turf &amp; Sports ISTRC Orion Management Solutions PBI/Gordon Corp. Prairie Dunes Country Club Professional Turf Products Redexim Turf Products Shadow Glen, The Golf Club Supreme Turf Products TurfWerks Urban Tree Specialists Van Wall Equipment Vermeer Great Plains</p>
<p><b><u>LUNCH SPONSOR</u></b></p>	<p><b><u>CART DONATIONS</u></b></p> <p>Alvamar Country Club Kansas Golf &amp; Turf M&amp;M Golf Cars</p>	<p><b><u>SPECIAL THANKS to our HOST COURSE!</u></b></p> <div style="text-align: center;"> </div>
<p><b><u>BEVERAGE SPONSORS</u></b></p> <div style="display: flex; justify-content: space-around; align-items: center;"> </div> <div style="display: flex; justify-content: space-around; align-items: center; margin-top: 10px;"> </div>		



**Faster Drainage. Firmer Surfaces. Healthier Turf.**

Excess moisture in a soil profile can cause problems affecting turf quality, turf health and playability. Terafirm is a non-phytotoxic soil penetrant developed to promote accelerated water movement away from the soil surface. Keeping excess water from prolonged retention in soil pores helps maintain soil porosity and air exchange and contributes to healthier turf.

*Reinders*


**Solutions & Supplies for the Green Industry**




**Terafirm**  
Soil Penetrant

- Reduces the surface tension of water
- Facilitates faster soil dry-down, allowing faster access to play, carts and equipment
- Promotes downward water movement
- Reduces puddling
- Helps prevent anaerobic soil conditions

<p><b>Dennis Whiteford</b> 913.238.0869 dwhiteford@reinders.com</p>	<p><b>Scott Wilcox</b> 816.977.9853 swilcox@reinders.com</p>	<p><b>Mike Maas</b> 913.217.0650 mmaas@reinders.com</p>	<p>19942 W. 162nd St., Ste. D Olathe, KS 66062 913.397.0800 www.reinders.com</p>
---	--	---	--



**Professional Turf Products, LP**




**Toro Triflex**

The all new Greensmaster Triflex takes cutting performance and playability to a whole new level, but it does even more for your bottom line!

This is the new riding greens mower that produces results like a walker!

Please call us for any new or refurbished product, and for your parts and service needs.

**1-888-PRO-TURF**

**WWW.PROTURF.COM**

[www.facebook.com/proturfprod](http://www.facebook.com/proturfprod)

## **Assistant Superintendent Committee**

*By Jonathan Bennett, Special Director*

I would first like to thank my committee members: Marc Szablewski, Grant Suderman, Sean Berger, and John Sheehe for their time this year to help with the Assistant Superintendent Programs and Employee Tournament. Our first Assistant Superintendent Program was held at the Overland Park Maintenance Facility where J.D. Rudd from 41 Action News came to speak about weather. He gave a brief description on what a typical day is for him and then he went more in depth about weather prediction and models that he uses.

The Employee Tournament has been moved back to early August and has been slated for August 3rd at Minor Park Golf Course. I would like to thank Matt Delventhal for his work helping us to provide our chapter a great tournament. Lunch and registration will be at noon. Shotgun will be at 1:00. Superintendents, please sign up your assistants and employees!

Going forward with the Assistant Superintendent Program, the committee has been looking into repeating last year's meeting at Kaufman Stadium, or possibly reaching out to Sporting KC for our next program. Stay tuned!



**HERFORT □ NORBY**

**G o l f C o u r s e A r c h i t e c t s**

Phone: 952.361.0644 Fax: 952.361.0645  
e-mail: [golfnorby@earthlink.net](mailto:golfnorby@earthlink.net) web: [www.herfortnorby.com](http://www.herfortnorby.com)

**The Pythium Project - cont.**

experiments will involve varying soil hydrology (VWC) to pinpoint when greens are most at risk for disease development. Isolates found to be most aggressive will be used in 2015 field studies incorporating the use of 27-inch diameter PVC “rhizosphere microplots” allowing the inoculation and containment of a single *Pythium* isolate.

Sampling and collection of isolates is imperative to the success of this project. We want to get the best idea of what *Pythium* spp. and diseases are occurring in our region. Submitting a sample is easy and can be important if you perhaps don’t have Pythium root disease- follow this link [Diagnostic Clinic Sample Submission](#), fill out the Turfgrass Disease Identification Form as best as you can (fungicide history REALLY helps), then overnight the sample. If you suspect you may currently have a Pythium root disease, or have had problems in the past, please contact Max Gilley at [mdgfg8@missouri.edu](mailto:mdgfg8@missouri.edu) to setup a site visit or sample submission.

## ADVANCED AMINO ACID TECHNOLOGY

- Backed by University Research
- Contains 18 Biologically Active L-Amino Acids
- True Foliar Absorption
- Enhances Efficacy of Nutrients and Chemicals
- Provides Maximum Protection from Stress
- Produced at a Pharmaceutical Facility-ISO 9001 & 14001 Certified
- Environmentally Safe



1-800-925-5187 [macro-sorb.com](http://macro-sorb.com)

KANSAS CITY TURF SUPPLY, INC.,  
13667 W. 129th Pl, Olathe, KS 66062 913-915-2994

Beechtree Golf Club, Aberdeen, Maryland - Hole #2, Par 3





BWI provides **THE BEST** selection of professional products, competitive prices, & excellent customer service.

Custom Blend Fertilizers • Nutrients • Soil Conditioners • Algacides • Fungicides  
Herbicides • Insecticides • Applicators • Watering Equipment

**BWI SPRINGFIELD** / 800.247.4954 / [www.bwicompanies.com](http://www.bwicompanies.com)

# THE ONES YOU CAN COUNT ON.



**Surge®**  
Premium Weed Control  
at a Competitive Cost



**Zylam®**  
Chewing and Sucking  
Insect Control



**Segway®**  
Proven Control  
of Pythium Disease

For your local PBI-Gordon distributor visit: [GordonsProfessional.com](http://GordonsProfessional.com)  
or call **Heath Schesser** at 913.626.5463 or **Don Frantz** at 303.718.7693

Always read and follow label directions. Checkered Flag/Label Design®, Gordon's®, ProForm®, Surge®, and Zylam® are registered trademarks of PBI-Gordon Corporation. Segway® is a registered trademark of Ishihara Sangyo Kaisha, Ltd. 6/15 03736

 **pbi/gordon**  
corporation  
*An Employee-Owned Company*

# - Promotion -

## Call George Hobbs at 913-515-9877



CUSHMAN®



**For Cushman®, it's more than  
delivering reliable, durable vehicles –  
its supporting the industry we serve.**

Purchase a Cushman® Hauler® utility vehicle between **January 1, 2015** through **December 31, 2015** and Cushman will contribute a \$50 per car donation to the Heart of America Chapter of the Golf Course Superintendents Association.

**LET'S WORK.®**

**PLATINUM PARTNERS**



**GOLD PARTNERS**



**SILVER PARTNERS**



# NINE & DINE

(honoring Past Presidents)



Promoting the welfare of the game of golf, the professional image and well-being of individual members, and to unite golf course superintendents in this area.

**DATE:** Tuesday, July 21, 2015

**LOCATION:** Heart of America Golf Academy  
7501 Blue River Road  
Kansas City, MO 64132

**HOST SUPERINTENDENT:** Sam Bailey

**SCHEDULE:** 11:00am – Registration & Lunch  
12:00pm - Meeting & Program  
1:00pm – Golf - 9 Holes  
After Tournament - Awards



**COST:** \$20 per person; Past Presidents are FREE!

**TOPIC/SPEAKER:** “Hot Topics” with Zac Reicher, Bayer Environmental Science

**DRESS CODE:** Country Club Attire (Collared Shirts, No Jeans or Cargo Pants). Please clean your soft spikes.

**FORMAT:** Play your own ball

**RESERVATIONS:** Mail, Fax or Email by July 16, 2015.

---

**☐ Yes, I/we plan to attend the Nine & Dine!**

Player: _____	Company: _____
Player: _____	Company: _____
Player: _____	Company: _____
Player: _____	Company: _____

Person to Contact and/or Invoice: \_\_\_\_\_

Company: \_\_\_\_\_

Full Address: \_\_\_\_\_

Phone/Cell: \_\_\_\_\_ Email: \_\_\_\_\_

**PAYMENT:**

Check Enclosed  
  Invoice(\*)  
  Credit Card: No.: \_\_\_\_\_

Past President – FREE  
 Exp.: \_\_\_\_\_  
 Security Code: \_\_\_\_\_

Name on Card: \_\_\_\_\_

**NOTE:**

(\*) By requesting to be invoiced; you agree to pay upon receipt.  
 All “No Shows” will be billed.  
 You may cancel without penalty 72 business hours prior to stating registration time.

Complete Form and Mail, Fax or Email no later than **July 16** to:  
 Heart of America Golf Course Superintendents Association  
 638 W. 39<sup>th</sup> Street . Kansas City . Missouri . 64111 . 816-561-5323 . 816-561-1991/fax . kweitzel@westerneda.com

## Editor's Column



It's been a while since I wrote my last "Editor's Column", mostly due to my lack of interesting things to type. Not that I have found my writing groove, I will try to type something somewhat worthwhile in the next few paragraphs. I will say, however, that the last column I wrote struck quite the chord and my assistants have been threatening to leave if I didn't pay them more. I told them the budget was already set and that was that. I did, reluctantly, agree to give them three more minutes for lunch.

As for all things HAGCSA, it seems things are chugging right along. Even though it may seem like we do a lot of the same things year after year, things tend to evolve (or devolve) based on what the board is hearing from the membership. One thing that has gained steam is the Rounds4Research auction. Ethan Shamet and company did a great job of getting courses to donate rounds and promoting the auction. If you are a regular sports talk radio listener, I'm sure you heard our advertisement on 810 WHB. It helps to have a connection or two to get the pricing down that's for sure. Thanks Mr. Andy Klein.

Of course, you can't have everything go your way at all times in this business. If it did, we'd definitely have a lot less stress in our lives. This weather has more or less stunk every day for the last six months. It's been too cold, then it was too wet and now it's too hot. I suppose I'll never get the weather I expect until I move to Florida. I suppose they're never happy down there either.

My parting shot is aimed at freelance writers trying to make a buck by selling worthless articles to any news promoting website on the WWW. The other day I read an article titled "Top Ten Jobs You Didn't Know You Wanted". Of course Golf Course Superintendent made the list. I suppose a lot of people would love to have our job over theirs. I don't blame them. The problem is you wait a few weeks and read another article titled, "Top Ten Poor Paying Jobs with the Most Stress". Number 7 on the list happens to be "Golf Course Superintendent". So, if I'm thinking of changing careers and googling to find my dream job, I'd probably steer clear from the one that appears on all the good lists and all the bad lists. I'd start to question whether I would want to dive into a new career where only the people actually performing the job know what the job entails.

**Tim Nielsen**, Editor



# MEMBERSHIP APPLICATION

Name \_\_\_\_\_ GCSAA Membership #: \_\_\_\_\_  
 Club or Company \_\_\_\_\_  
 Address \_\_\_\_\_  
 City \_\_\_\_\_ State \_\_\_\_\_ Zip \_\_\_\_\_  
 Phone \_\_\_\_\_ Fax \_\_\_\_\_  
 E-mail \_\_\_\_\_ Spouse's Name \_\_\_\_\_

Check here if you wish to receive your mailings at home.

Home Address: \_\_\_\_\_ City \_\_\_\_\_ St \_\_\_\_\_ Zip \_\_\_\_\_

## JOB INFORMATION: LIST CURRENT EMPLOYMENT FIRST

DATES EMPLOYED		EMPLOYER NAME & CITY/STATE	TITLE
From _____	To _____	_____	_____
From _____	To _____	_____	_____
From _____	To _____	_____	_____

I hereby make application for membership in the Heart of America Golf Course Superintendents Association and attach herewith my dues for the current year. If accepted, I agree to uphold the by-laws of this Association and subscribe to the following code of ethics. To the end that confidence and respect may be enjoyed by members of our Association, the code of ethics is promulgated and observation of its provisions required.

- Every member shall take pride in his/her work and regard it as a profession in which all members strive to maintain its good name.
- Realizing that the best asset that a member can have is thorough knowledge of his/her business, he/she shall constantly try to improve his/her knowledge and effectiveness by freely exchanging experiences and ideas with fellow members and take advantage of all opportunities for improvement.
- He/she shall endeavor to maintain courteous relations with his/her employer and his/her associates and endeavor to have his/her employees take pride in doing their work well.
- In accomplishing his/her own and the Association's best interest, observance of the following suggestions are recommended.
  - **Seeking Employment:** 1. Seek counsel of local associations when applying for a position in a new district; 2. Recommend only qualified GCSAA members; 3. Ascertain the wage scale in the district in which you are seeking employment, then uphold that talk with the person who last held or now holds the position of Golf Course Superintendent.
  - **Visiting:** 1. Announce your HAGCSA or GCSAA membership when visiting; 2. Always contact the Superintendent of the course you are visiting; 3. Honor requests for technical help from golf courses only when channeled through the Superintendent of the course making the request.

**Communication Consent:** I agree to receive notices, advertisements, announcements, brochures, and other information from Heart of America Golf Course Superintendents of America via facsimile, telephone or e-mail. I further agree that my express permission to fax, telephone or e-mail me such notices and other information will continue and have no date of expiration, unless a written request is received indicating a change in permission.

**ATTESTED:** The applicant must be attested by two Heart of America GCSA members.

Attested \_\_\_\_\_ Date \_\_\_\_\_

Attested \_\_\_\_\_ Date \_\_\_\_\_

Applicant's Signature \_\_\_\_\_ Date \_\_\_\_\_

**Please include Annual Membership Dues with Application (Term: January to December):**  
 Superintendents/\$130 - Assistant Superintendents/\$70 - Supplier/\$130 - Golf Course Employees/\$70 - Student/\$25

### Heart of America Golf Course Superintendents Association

P.O. Box 419264 • Kansas City, MO 64141-6264 • 816-561-5323 • Fax 816-561-1991 • www.hagcsa.org

**OFFICE USE:**  Acknowledgment Email  Board Approval  Database  Welcome Email/Website Password  Mailing/Roster  Process Payment

# INDEX of ADVERTISERS

Bayer.....	9	Midwest Pump and Fountain.....	11
BWI.....	17	Milorganite.....	4
E-Z-GO/Cushman.....	18	Professional Turf Products.....	14
Helena Chemical.....	3	Reinders.....	14
Herfort Norby Golf Course Architects .....	15	Supreme Turf.....	13
Kansas City Turf Supply.....	6, 16	Turfwerks.....	5
PBI Gordon .....	17	Vermeer Great Plains.....	12
Marco-Sorb Technologies .....	7		
Mid America Sand .....	7		